

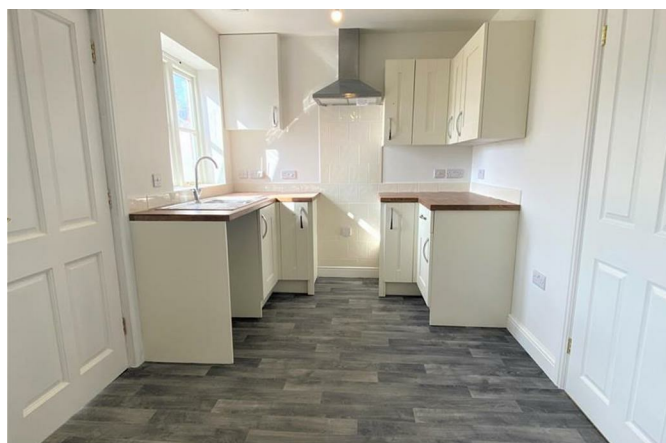
3 Haston Road Hadnall Shrewsbury SY4 3DJ



2 Bedroom House - Terraced
£875 PCM

The features

- A two bedroom cottage
- Far fetching views
- Recently fitted kitchen
- Bathroom with Shower
- Viewing Essential
- Idyllic rural location
- Living Room
- Two Bedrooms
- Rear Garden
- EPC Rating C



A recently renovated 2 bedroom cottage situated in this idyllic rural location. Having recently undergone extensive renovations this cottage offer a newly installed bathroom with shower over bath, attractively fitted kitchen and garden.

Property details

ENTRANCE HALL

LIVING ROOM

With window to front aspect, radiator

KITCHEN

With window overlooking rear garden, fitted with cream fronted base units with round edge worksurfaces over and tiled splashbacks, Space for electric cooker with extractor hood in place, matching range of eye level units.

From the Living Room staircase leads to FIRST FLOOR LANDING

BEDROOM 1

With windows to front aspect, radiator

BEDROOM 2

With window to rear aspect, radiator

BATHROOM

Newly fitted with white suite to include bath with electric shower over, wash hand basin set in vanity unit and low level WC. Complimentary tiling to walls.

OUTSIDE

Rear garden is laid to lawn

3 Haston Road, Hadnall, Shrewsbury, SY4 3DJ.

2 Bedroom House - Terraced
£875 PCM





Judy Bourne

Director at Monks

judy@monks.co.uk

Get in touch

Call. 01743 361422

Email. info@monks.co.uk

Click. www.monks.co.uk

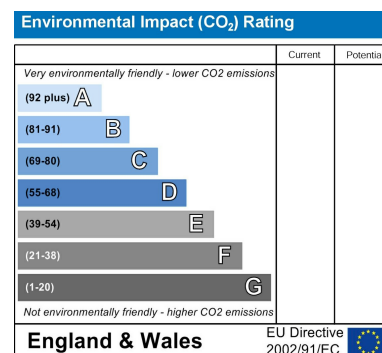
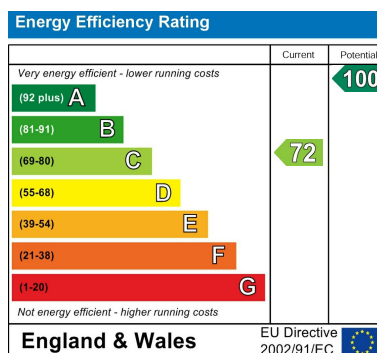
Shrewsbury office

10a-11 Shoplatch,
Shrewsbury, Shropshire, SY1

We're available 7 days a week

HOME – four words that define who,
and what we are:

Honest, Original, Motivated, Empathetic



Monks for themselves and for the vendors of this property, whose agents they are give notice that:

- These particulars provide a general outline only for the guidance of intended purchasers and do not constitute part of an offer or contract.
- All descriptions, dimensions and distances are approximate, references to state and condition, relevant permissions for use and occupation and other details are provided in good faith and believed to be correct.
- No person in the employment of Monks has any authority to make or give any representation or warranty whatever in relation to this property.
- Electricians and other appliances mentioned in these particulars have not been tested by Monks. Therefore prospective purchasers must satisfy themselves as to their working order.